

TECHNICAL DATASHEET

DOCUMENTS • TECHNICAL • DETAILS • PRESENTATION



Parts



Material



Certificates

www.konzept-terrasse.de



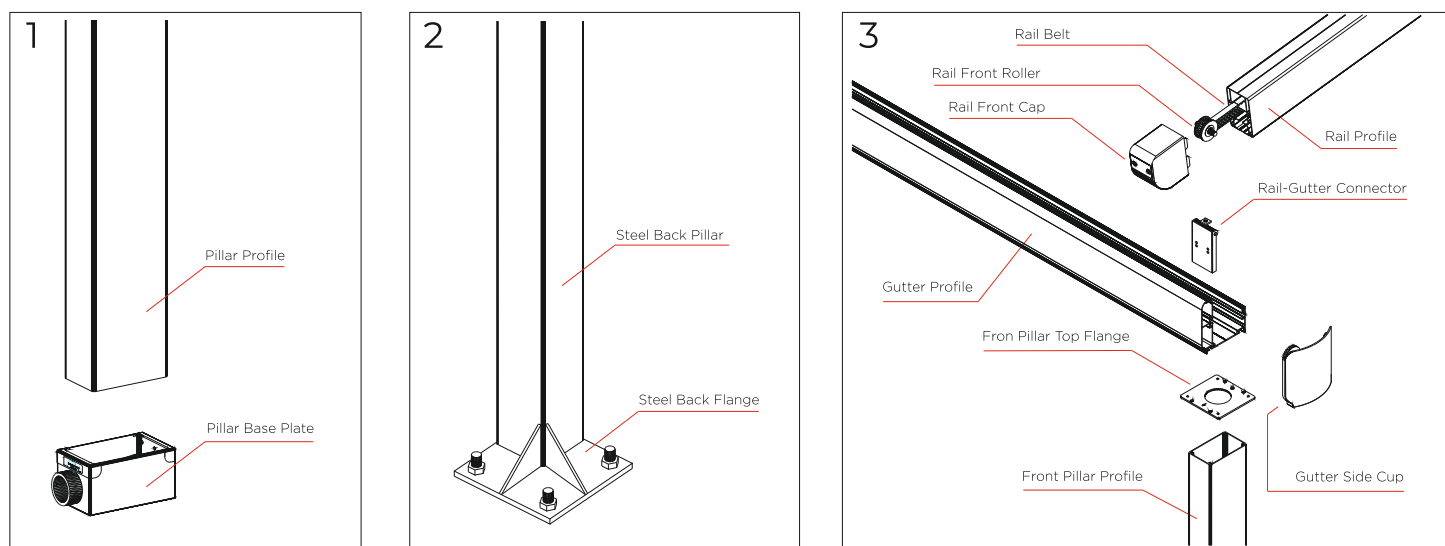
About Us

Im Jahr 2008 wurde Konzept Terrasse von Geschäftsführer Ünal M. ins Leben gerufen. Unser Ziel ist es, unseren Kunden maßgeschneiderte und hochwertige Lösungen anzubieten, um ihr OutdoorErlebnis zu verbessern.

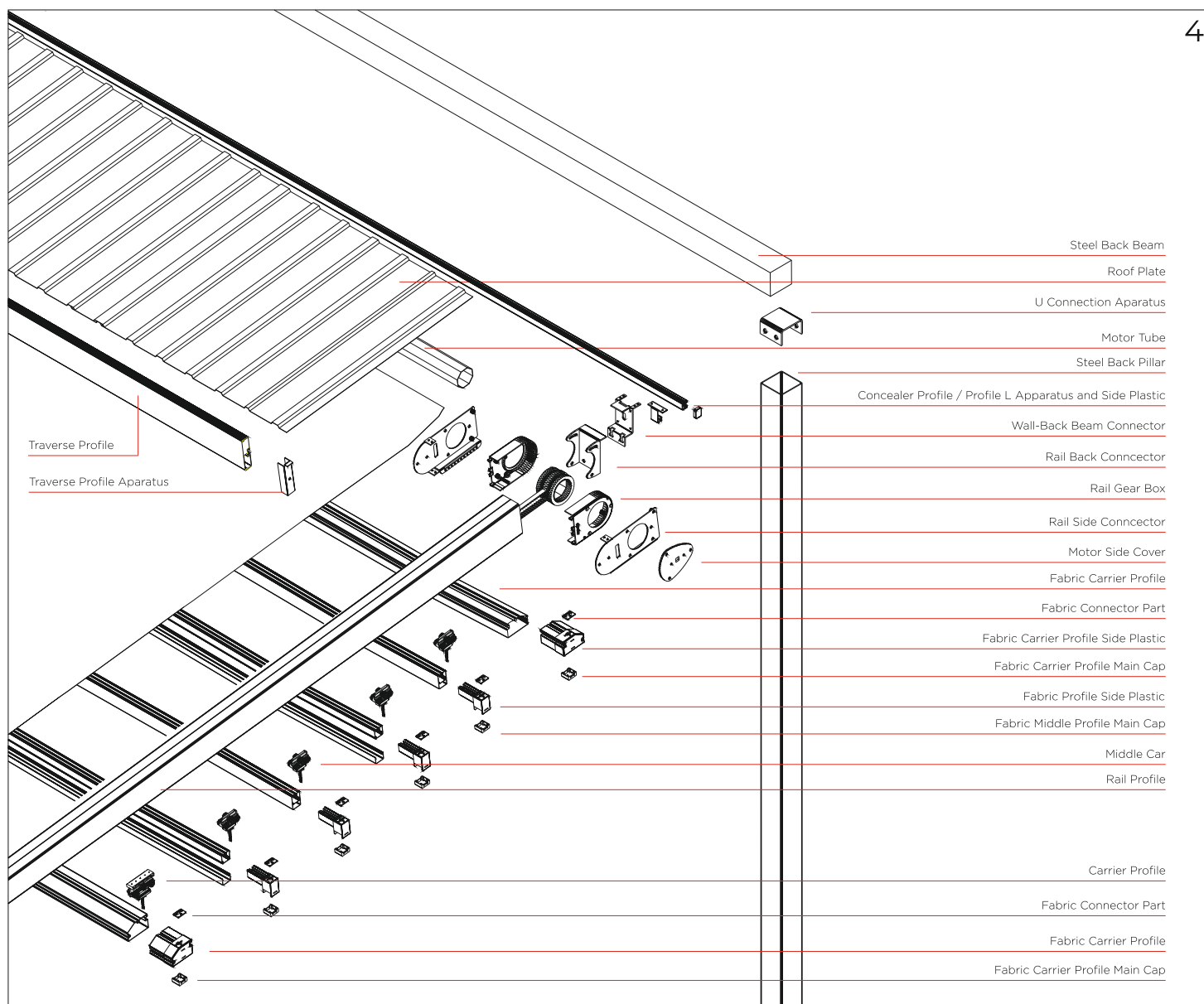
Unser Unternehmen betreibt eigene Produktionsstätten, um spezielle Lösungen gemäß den individuellen Bedürfnissen unserer Kunden zu entwickeln. Auf diese Weise können wir einen schnellen und effizienten Montageprozess sicherstellen. Wir sind bestrebt, unsere Produktionsprozesse kontinuierlich zu überprüfen und zu verbessern, um unsere Qualitätsstandards auf höchstem Niveau zu halten.

Seit unserer Gründung verzeichnen wir kontinuierliches Wachstum und Entwicklung, um die Kundenzufriedenheit und die Servicequalität kontinuierlich zu steigern. In diesem Sinne arbeiten wir eng mit der Weinor GmbH zusammen, einem führenden Unternehmen im Bereich Sonnenschutz und Markisen, um unseren Kunden umfassendere und innovativere Lösungen anzubieten

II. Connection Point Details

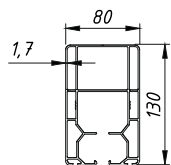


1. Front Pillar - Ground
2. Back Pillar - Ground
3. Front Pillar - Rail - Gutter
4. Fabric-Rail-Back Pillar

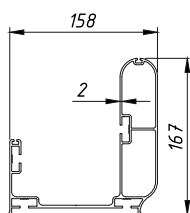


III. Aluminum profiles, sections and properties

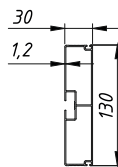
Konzept guarantees that all aluminum profiles used in its products are of **DIN6060**, **DIN6061** and **DIN6062** quality, depending on where they are used.



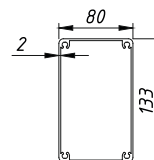
1 - GOLD rail profile



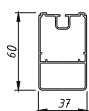
2 - GOLD gutter profile



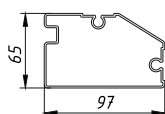
3 - GOLD traverse profile



4 - GOLD pillar profile

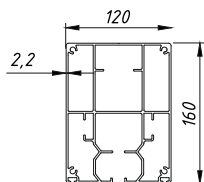


5 - GOLD middle support profile

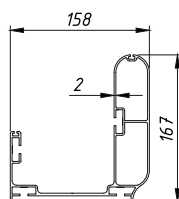


6 - GOLD carrier support profile

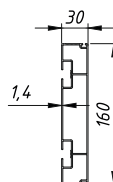
GOLD
Series Profiles



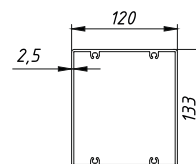
1 - DIAMOND rail profile



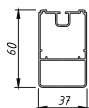
2 - DIAMOND gutter profile



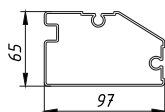
3 - DIAMOND traverse profile



4 - DIAMOND pillar profile

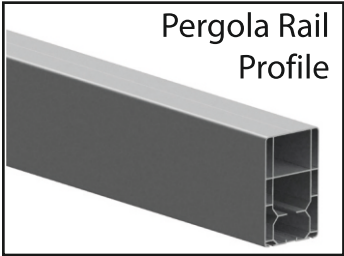


5 - DIAMOND middle profile

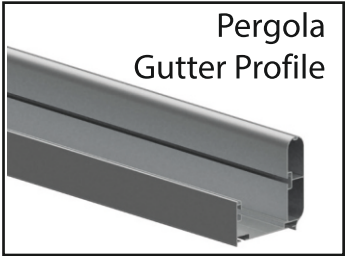


6 - DIAMOND carrier profile

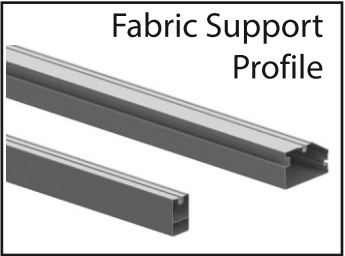
DIAMOND
Series Profiles



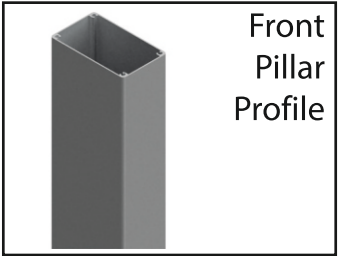
Pergola Rail
Profile



Pergola
Gutter Profile



Fabric Support
Profile



Front
Pillar
Profile

Chemical composition according to EN573-3 (EN - AW %)

Alloy	Si	Fe	Cu	Mn	Mg	Cr	Zn	Ti	Others		Al
									Each	Total	
6060	0,30-0,60	0,10-0,30	0,10	0,10	0,35-0,60	0,05	0,15	0,10	0,05	0,15	Rest

Mechanical properties according to EN 755-2 extruded profiles

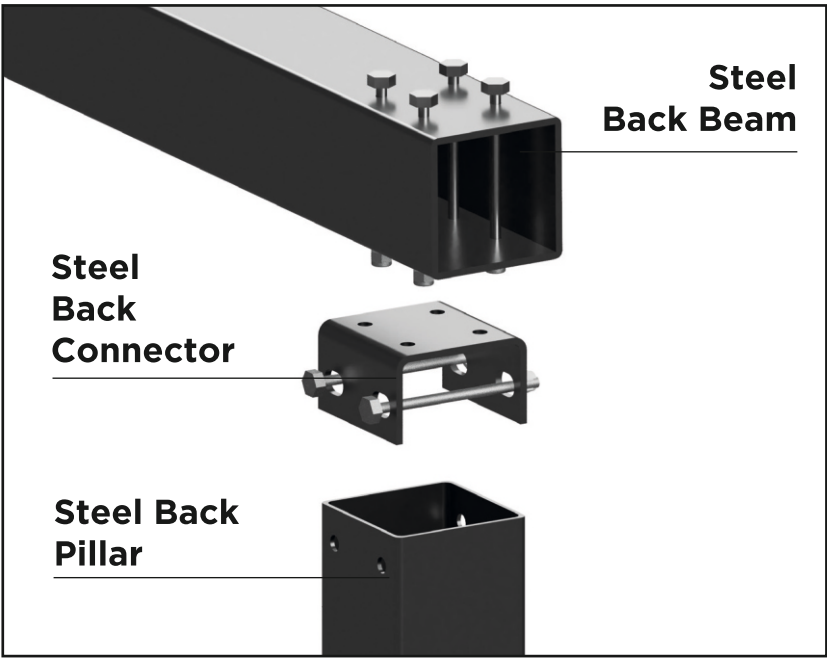
Alloy	Temper	Wall Thickness e mm*	Tensile strength Rm Mpa min	Proof stress Rpo,2 Mpa min	Elongation		Brinell Hardness HB**
					A50mm % min	A % min	
EN -AW 6060	T4	e ≤ 25	120	60	14	16	45
	T5	e ≤ 5	160	120	6	8	55
	T6	e ≤ 3	190	150	6	8	65
		3 < e ≤ 25	170	140	6	8	60
	T66	e ≤ 3	215	160	6	8	70
		3 < e ≤ 25	195	150	6	8	65

* For different wall thicknesses of a given profile, the lowest specified values of properties shall be considered as valid for the whole profile cross-section.

** The values for the HB hardness are indicative only. aluminco.com

Physical properties	
Alloys EN - AW	6060
Metalic range °C	585-650
Density g/cm³	2,70
Electrical conductivity MS/m	34-38
Thermal conductivity W/(m K)	200-220
Specific Heat J/(Kg K)	898
Thermal expansion values	
-50 to 20 °C (10 ⁻⁶ K)	21,8
20 to 100 °C (10 ⁻⁶ K)	23,4
20 to 200 °C (10 ⁻⁶ K)	24,5
20 to 300 °C (10 ⁻⁶ K)	25,6
YoungsModulus Mpa	69500
ShearModulus Mpa	26100

IV. Steel profiles, sections and properties



Steel Pillars / Steel Back Beam

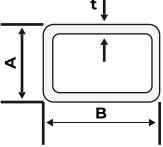
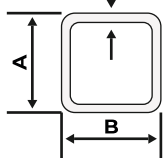
Made of steel in accordance with DIN 2395 norms.

Coated with Hot Galvanize (Min. Thickness 60 Qm)

Painted in system color with Powder Coating on Hot Galvanized,

Minimum 100x100x3mm section detail, Welded on the profile, manufactured in one piece with 25x25x5 mm steel plate, Minimum Weight: 8990 gr / mt

Steel Profile Weight (kg/m²)

Steel Back Beam	$\begin{matrix} t \\ A \times B \end{matrix}$	3 mm	4 mm	5 mm	6 mm	
	50 x 100	6.630	8.650	10.500	13.260	
	100 x 100	8.990	11.800	14.400	17.980	
Steel Pillar	100 x 150	11.500	15.000	18.060	23.000	
	120 x 120	11.100	14.100	17.400	22.200	
	150 x 150	13.900	18.120	21.350	27.800	
	200 x 200	17.980	23.600	28.800	35.980	

Chemical composition

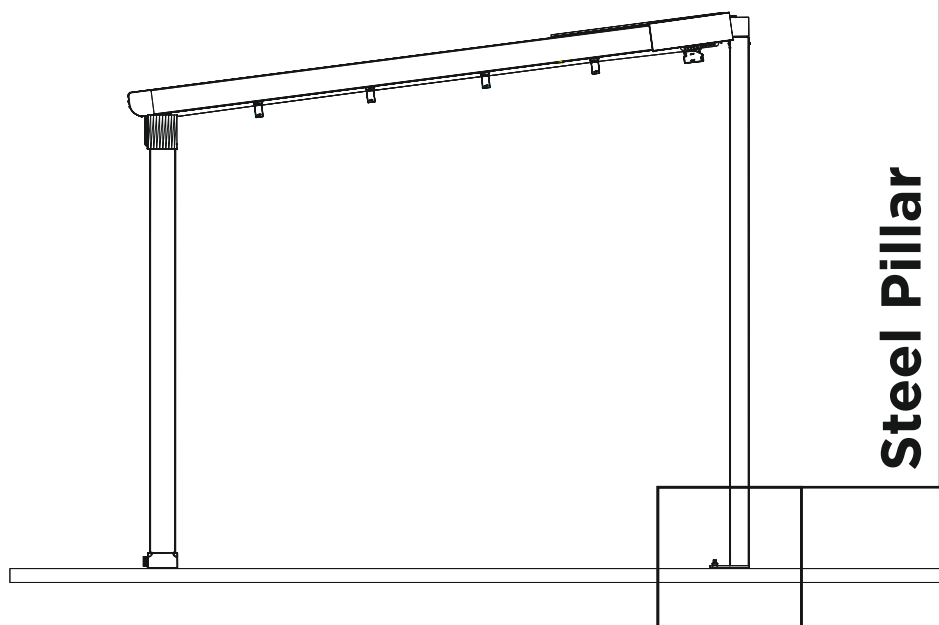
Steel grade	Styles	Carbon, max, %	Silicon, %	Manganese, %	Phosphorus, max, %	Sulfur, max, %	Nitrogen, max, %
ST37-2	Steel Angles	0.20	0.15 - 0.35	0.35 - 0.75	0.050	0.050	0.011

Mechanical property

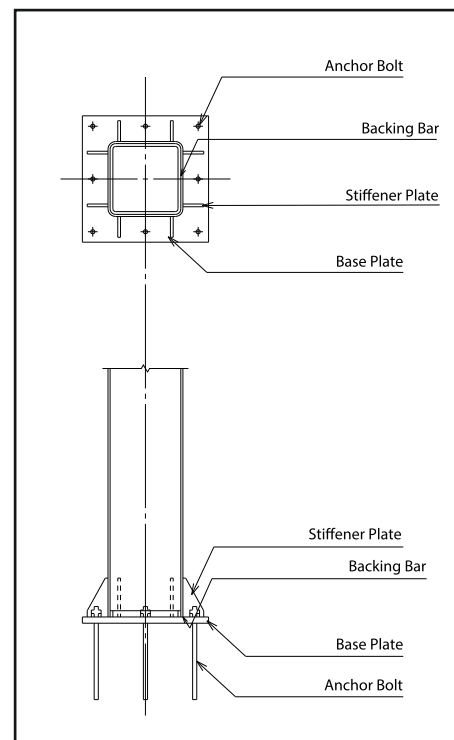
Steel grade	Styles	Tensile strength, ksi [MPa]	Yield point, min, ksi [MPa]	Elongation, min, δ , %
ST37-2	Steel Angles	52 - 67 [360 - 460]	34 [235]	25

Steel Pillar

We use steel material for the back pillars in Pergolas. In projects requiring extra conditions, steel pillars are rarely used by changing the front pillars.



Steel Pillar



V. Powder coating and Process properties

Konzept gives a 5-year paint warranty for its powder coated products. All aluminum and steel materials used in Sunset products are manufactured by painting with PE Electrostatic Powder Paint. Sunset is a manufacturer company that has chemical purification and abrasion facilities, which are an important part of the Zpowder coating process. Sunset, uses on all products, Europe and Turkey's finest manufacturers Powder JOTA's, PULVE and IBA brand's 1.Quality Polyester Powder Coating. Sunset paint quality complies with QUALICOAT standards. Every project produced in the Sunset factory goes through a quality control process based on the experiment and observation staff determined by QUALICOAT.A special "Quality Certificate" is prepared for each order and delivered to our customers. Sunset delivers to its customers test plates and test reports showing that these tests have been performed together with the products.

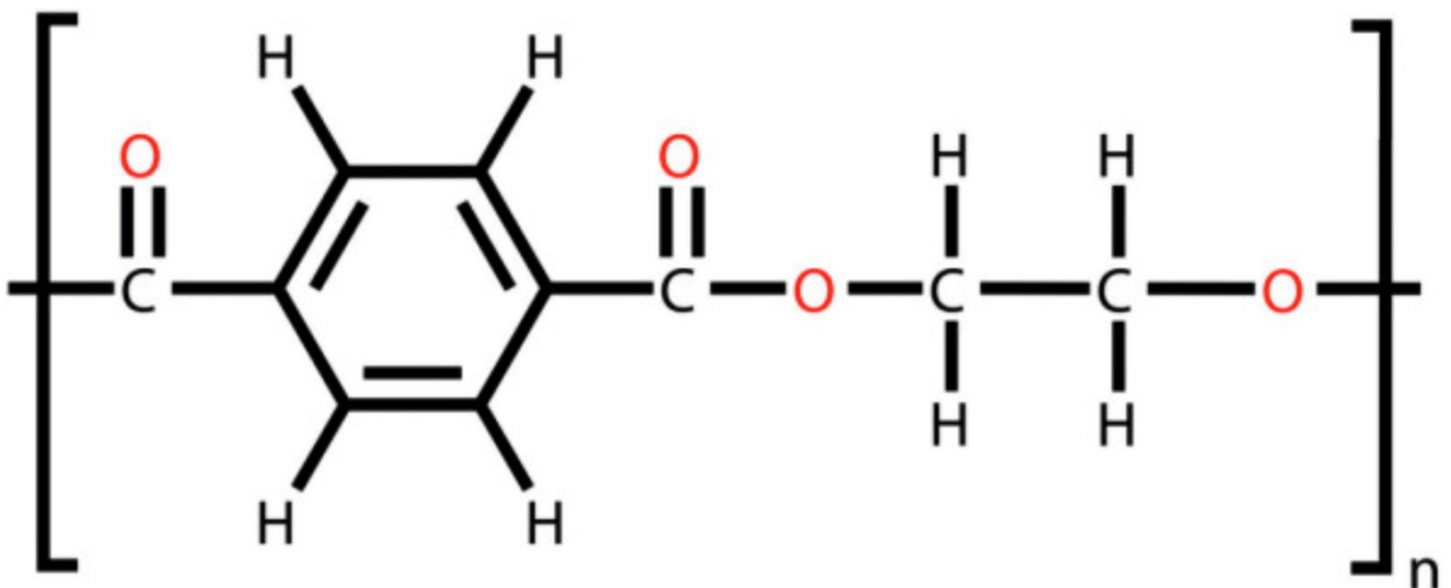
Test Standards : Within the QUALICOAT admissions, all tests listed below must be passed:

- **Adhesion Test (EN ISO 2409)**
- **Bending Test (EN ISO 1519)**
- **Impact Test (ASTM D2794)**
- **Cupping Test (EN ISO 1520)**

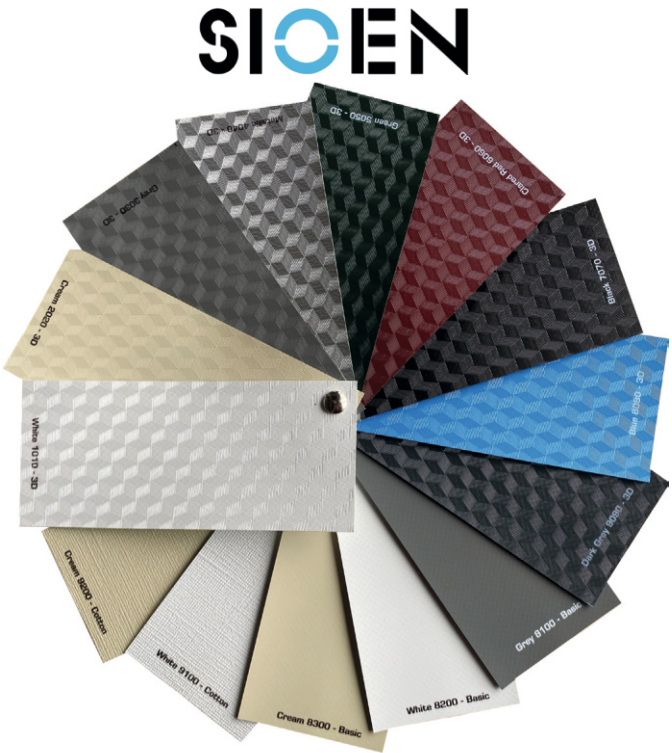
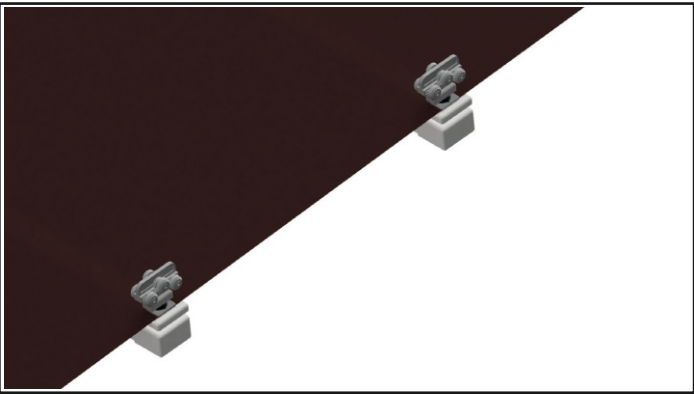
- There are 5 5m3 bathrooms
- Acidic degreasing
- Mains rinse
- DI rinse
- Passivation Bath
- DI rinse



Polyester Chemical Formula



VI. PVC Fabric



Technical Properties		
Fabric	100 % PES, 1100 dTex	
Weight	850 gr/m2	DIN ISO 2286/2 1998
Boss	LIN	
Characteristic	ABUV/SOP	
Coating	1.Jan	
Fracture Resistance (WARP)		EN ISO 1421/ 1998
Fracture Resistance (WEFT)		EN ISO 1421/ 1998
Tearing Resistance (WARP)		DIN 53363 2003
Tearing Resistance (WEFT)		DIN 53363 2003
Adhesive Resistance		EN ISO 2411 2000
Heat Resistance	-30 / + 70 C	DIN EN 1876/2 1998
Flame Retardant		NF P 92 507 2004

Konzept is a working partner with SIOEN, the world's largest and highest quality PVC fabric manufacturer.

Turkey's widest range of colors and patterns deck is only available to consumers by Sunset.

We are sure that you will find the most suitable color and pattern for your living space among the fabric options that are renewed every year.

Movable ceiling cover material should be PVC-based, 800 gr / m² in weight, consisting of three layers, and blackout feature.

Manufacturer: SIOLINE (Belgium), FERRARI (Italy) veya MEHLER (Germany)

Coating Type: Coating PVC Type

Light Transmittance Block-out (Light Proof)

Hygiene UV protected Anti Lacquer Coating

Flame Retardancy B2 Retarder

Weight 800 g / m² EN ISO 2286-2

VII. Tension / Drive Belt

SkyFree provides the movement it takes from the Tubular-based engine to aluminum panels with ELATEC (Italy), the world's number 1 manufacturer, with 16mm drive belts. Tension belts are in "HIDDEN" and "PROTECTED" condition within the Rail Profiles. Invisible from the outside and the system The drive belt and system, which is an important movement system part, are guaranteed for 7 years.

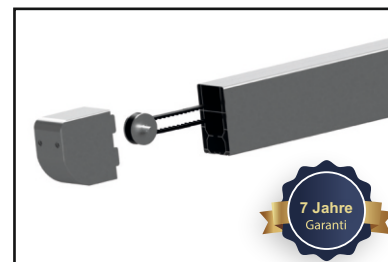
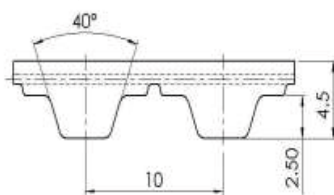
Belt Product Specification

16 TT10

Profile TT10

Width 16 / 25

Cord Galvanized Steel



Dimensional characteristics

Width	16	± 0.5 [mm]
Thickness	4,5	± 0.2 [mm]
Length		± 0.5 [mm/m]
Measuring Preload	28,6	[N]
Weight	0,05	[Kg/m]

Material characteristics

TPU 92 Sh.A

Colour

WHITE

Tension member

Diameter	0,63
n.	11

Technical characteristics

Allowable Tensile load Type M [N]:	1265
Allowable Tensile load Type V [N]:	632,5
Breaking load FBr [N]:	4620
Specific spring rate Cspez [N]:	316250

Flexibility

Drive without reverse bending	Z_min	12
	d_min Idler	60 [mm]
Drive with reverse bending	Z_min	20
	d_min Idler	60 [mm]

Working Temperature range

-10 ÷ +80 ° C

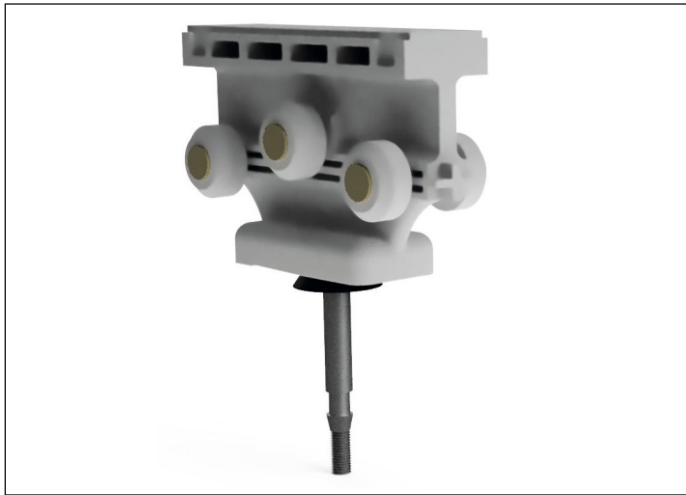
Branding



Elatech ® - 16TT10A - batch nbr - Made in Italy

VIII. Carriages Standards

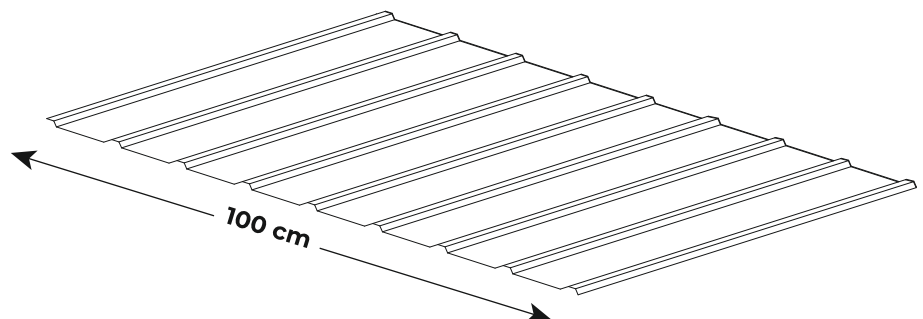
Konzept uses the highest quality principles in PVC cars and carriers, which are important parts of the movement system. In addition to the body made of ABS-added high-strength Polyster, the carrier wheels are made of DERLIN, which is not affected by liquid and dust and does not require lubrication. BRASS and / or STAINLESS steel bushings, screws and bolts are used at all connection points. Main Carrier Trolleys are "6", Secondary Carrier Trolleys are "6" wheels. Compression and conveying surface area and number make the system's fluidity perfect



IX. System Roof Plate

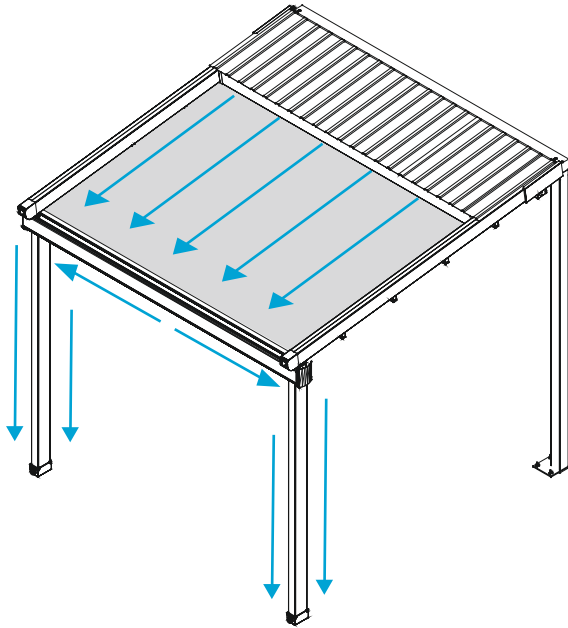
The product includes a protective roof under which all the fabric will gather when the system is turned off. As the system roof, sheet plates made of Galvanized Plate painted with Powder Paint are used. Sheet thickness min. It is 0.5 mm. System roof max. It is supported by traverse profiles made of aluminum mounted between the rails, one in 50 cm.

* Roof plate sending to our customers 100 cm pieces to keep it more flexible and easier.



X. Water Drainage System

The system drains the water that falls on it in rainy weather, to the stream profile thanks to its forward slope, and then to the outside via the carrier poles at the front. It is designed to have one pole profile under each rail profile. Floor connection shoes mounted under the poles should be made of Cast Aluminum and protected against rusting with protective anodized coating before powder coating. The ground connections of the pole shoes are completely hidden, no ground connection elements are visible..



Stream Water Transfer and Discharge Capacity (Standard: TS EN 12056-3)

Groove Capacity	1,49 L/S
Drainage Capacity	1,20 L/S
Drainage Requirement*	32 m2/ 1Piece

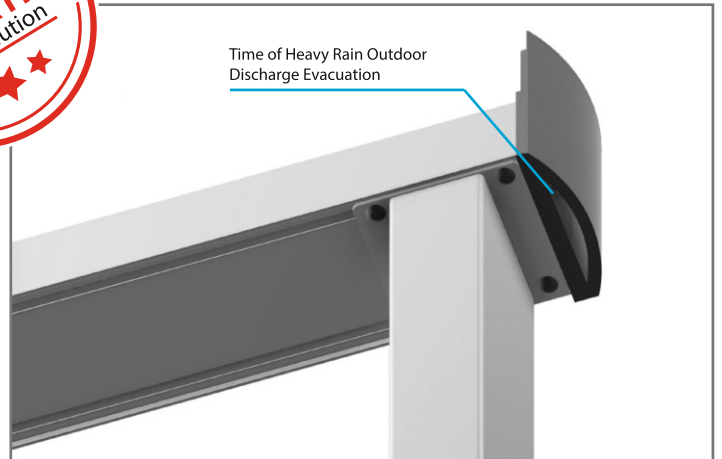
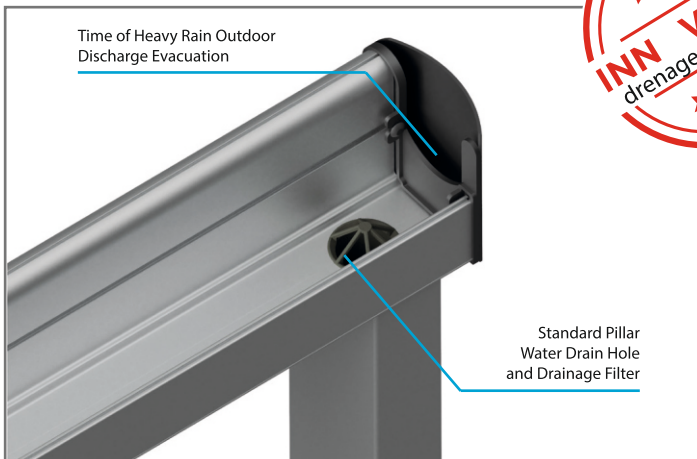
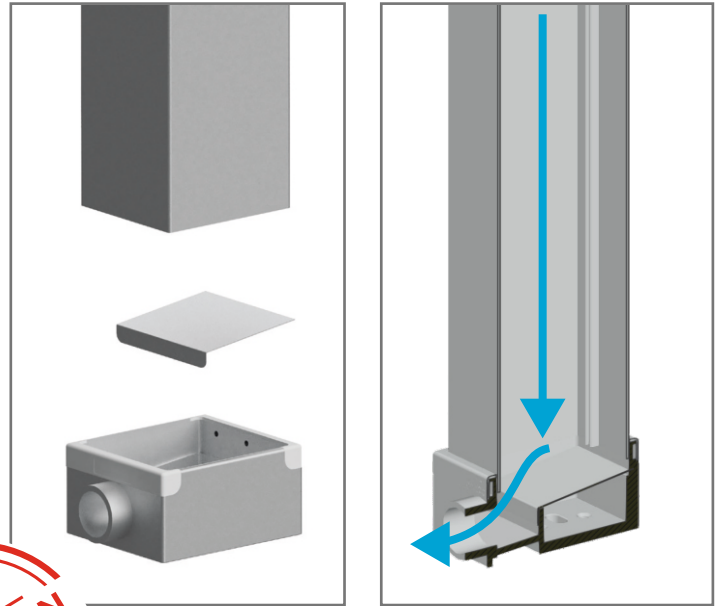
Under conditions of heavy rainfall (0,031 liters per hour)

Water Discharge Capacity

For each of the 32 m2 fabric area, Cedrus requires "1" unit of leg assy.

De arj Tahliyesi

For the first time in the Pergola sector, the "Discharge Evacuation" solution is exclusive to Sunset. In times of sudden and heavy rainfall, the problem of overflow, which you can see in other pergolas, disappears with the "Discharge Evacuation" and your living space is not affected by the disaster.

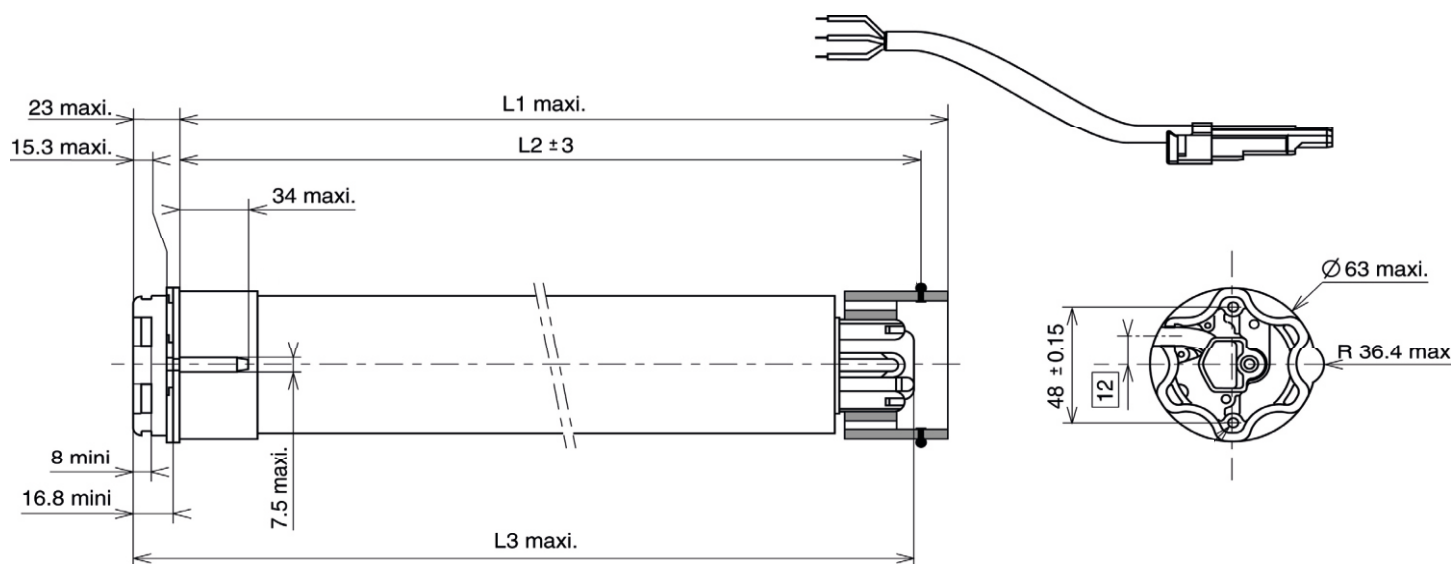


XI. Motor and Remote Control

Movement must be provided for each product with one 85/17 Somfy Altus Motor.
The motor is also controlled by Somfy RTS Telis Remote Control.

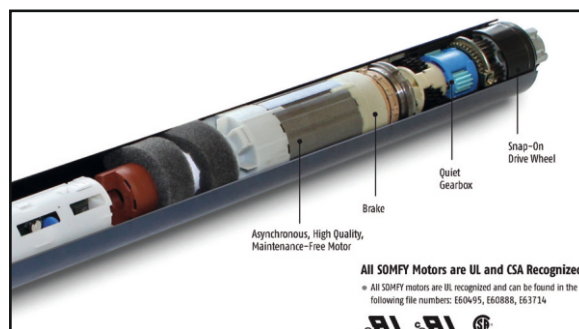


Somfy motor cross section



Somfy Motor Technical Specifications

Type of head	Star Head
Nominal voltage	230 V 50 Hz
Power supply tolerances	207 - 253 V AC
Thermal time	4 minutes
Number of wires of the cable	3
Wire section	0,75 mm ²
Type of limit switch unit	Electronic
Capacity of the LSU	200 turns
Repeatability	< ± 3°
System of protection	IP 44
Interface drawings	Wheel interface LT60 206801-Crown interface LT60, LT60ADF, FTS60 & LT60CSI 206802-Interface drawing star head LT60 206803-Interface drawing LT50&60 buttons 206817.
Radio frequency	433,42 MHz
Coding	Rolling code 16million of possibilities
Capacity of memory	12 different transmitters plus 3 wireless sensors
Antenna	Integrated
Range	20 m with 2 reinforced concrete walls to be passed through
R&TTE (Radio Equipment and Telecommunications Terminal Equipment Directive)	Dir 1999/5/CE
Safety Security	EN 60335 - 2 - 97
Electromagnetic compatibility	EN 301489 - 3
Radio frequency	EN 300 - 220 - 3
Application	
Principle	
Basic crown for tube Ø	63 x 1,5 mm
Temperature working range	Normal use: -10°C to +40°C Exceptional use (20% of the life time not simultaneous): -20°C to +70°C
Noise level	According to SOMFY measures (for information only). Worse value: in load up direction during 10 seconds.



	Nm	rpm		mm	mm	mm	mm	W	A	°C		kg	dBA	mm	µF
Designation	Nominal torque	Nominal speed	Reference	L1 max.	L2 (±3 mm)	L3 max.	tube	Rated power	Rated current	Thermal tripping	Brake type	Weight	Noise	Stator	Capacitor
ALTUS 60 RTS 55/17	55	17	5005453	734	717	740	670	290	1,5	130	sliding	4,18	64	85	11
ALTUS 60 RTS 70/17	70	17	5005454	734	717	740	670	350	1,9	130	sliding	4,5	66	100	14
ALTUS 60 RTS 85/17	85	17	5005455	734	717	740	670	400	2,1	140*	sliding	4,7	66	115	15
ALTUS 60 RTS 100/12	100	12	5005456	734	717	740	670	350	1,9	130	sliding	4,82	65	100	14
ALTUS 60 RTS 120/12	120	12	5005457	734	717	740	670	400	2,1	140*	sliding	5,03	65	115	15

*Red tagged motor types using in our systems

Snow Load



SILVER
System

[illegible]

GOLD
System

[illegible]

DIAMOND
System

[illegible]



System

System

System

[illegible]